

QUICK INSTRUCTIONS

ELECTRO MAGNETIC WASHING MACHINE "L.E.M." FOR CARTRIDGE CASES

Operating instructions and WARNINGS can be downloaded from in : www.lavabossoli-lem.com, or ask them from where purchased.

All information in this publication is based on the latest product information available at the time of approval for printing. Technique Engineering (T.E.) reserves the rights to make changes at any time without notice and without incurring any obligation. Illustrations in this manual are used to show the basic principles of operation and work procedures. They may not represent the actual product exactly in exact detail. No part of this publication may be reproduced without written permission.

EQUIPMENT

The machine L.E.M. is supplied with the components listed below:

- N.1 Washing machine
- N.1 Cylindrical tank
- N.1 Sealing lid/Cover
- N.1 Pack of needles-pins
- N.1 Wire Cable
- N.1 Quick Instruction / user manual

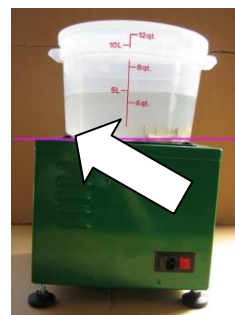


ASSEMBLY

Remove the protective foam from electric motor, assemble the feet, screwing them to the bottom of the machine. Make sure the feet are level in height, in order to have a stable and horizontal positioning of the machine.



Remove protection foam



Example of incorrectly adjusted machine ! the work plane must be horizontal!

IN CASE OF SHIPMENT OF THE GOODS, TO AVOID EXTRA COSTS DUE TO DAMAGE CAUSED BY TRANSPORT, YOU MUST STORE AND USE THE ORIGINAL PACKAGING AS RECEIVED.

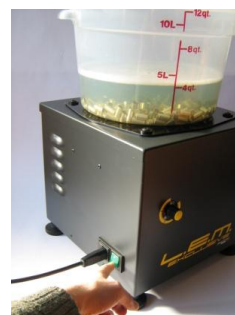
WASHING

Pour dirty cartridge cases in the cylindrical tank with one package (ONLY ONE!) of the ferromagnetic steel pins. Add of cold water (max 5 lt) and one (1) tablespoon of washing up liquid/dishwashing detergent (the detergent has a lubricating effect). The water must completely cover the cartridge cases. The inclusion of one (1) tablespoon of limescale remover is recommended, as it prevents limescale building up at the walls of the tank. If allowed to build up the limescale will cause a braking effect, preventing or seriously slowing the rotation of cartridge cases in the tank. It is forbidden to wash complete cartridges: DANGER!

Close the tank by fitting the plastic lid, making sure it fits snugly. Connect the power cord to the machine, and start the engine by flipping the power switch from "0" to "1". This will cause the ferromagnetic steel needles to be rotated by the motor's magnets, thus facilitating the cleaning process.

If the machine is so equipped (the "Deluxe"- version): adjust rotation speed to preferred level. From 2016 onwards, the "Exclusive"-version has two (2) cleaning programs. One totally automatic, to be used at very dirty cartridge cases, and one with adjustable rpm, to be used as a softer cleaning action.

The engine stops at the end of both cleaning programs. These two editions have instructions included in the package.



Washing recommended data and instructions : <http://www.lavabossoli-lem.com/download/>

After the cleaning process have finished (when you are satisfied with the result) flip the power switch from “1” to “0”. Lift the tank up from the machine and put the auxiliary magnet (not included), attracting the ferromagnetic steel needles (picture 1).
CAUTION: The magnetic tool must be kept away from iron surfaces like the top plate of the “L. E. M.”-washing machine.
 If allowed to affix itself to an iron object the magnets of our auxiliary magnetic tool can become dislodged and detached from the tool.

Remove the sealing lid from the tank, and pour the dirty liquid into another container, retrieving the now clean cartridge cases in a suitable filter/sieve. Then rinse the cartridge cases under running water (picture 2).

The ferromagnetic steel needles captured inside the tank by the auxiliary magnet tool can remain in the tank, just remember to clean them under running water before drying, making them ready for the next cartridge case cleaning session (picture 3).

The cleaned cartridge cases can be left to dry on e.g. a heated bathroom floor, in the sun, inside a baking oven (at moderate temperature, with the door open for ventilation) or in Technique Engineering’s own special cartridge case dryer.

To remove any remaining ferromagnetic steel needles from the cartridge cases left to dry place the auxiliary magnet tool inside a plastic bag and pass it over several times (picture 4). This will attract remaining ferromagnetic steel needles, trapping them to the outside of the plastic bag. Turn the plastic bag inside-out to free the ferromagnetic steel needles from the magnet, capturing them inside the bag – ready for the next cartridge case cleaning session. Failure to use the plastic bag around the auxiliary magnet tool will cause the ferromagnetic steel needles to stick directly to the auxiliary magnet tool, making it a hard task removing them (picture 5-6).

Before reloading the cleaned cartridge cases make sure there are no ferromagnetic steel needles left inside the cases !



GENERAL WARNINGS:

BEFORE USE READ INSTRUCTIONS AND KEEP THEM AT HAND;

KEEP MACHINE AWAY CHILDREN AND PACE MAKER BEARERS;

DO NOT USE THE MACHINE IN PUBLIC AREAS AND IN DOMESTIC ENVIRONMENTS

DO NOT USE THE MACHINE FOR ANY OTHER PURPOSES THAN IT IS MADE FOR; DO NOT PLACE HANDS UNDER THE MACHINE WHEN IT IS CONNECTED TO ELECTRICAL POWER OR WHEN IS RUNNING.

ALWAYS USE SAFETY PROTECTIONS ESPECIALLY FOR EYES, EAR, HANDS AND HEAD.

THE MACHINE IS EQUIPPED WITH PERMANENT MAGNETS. **DO NOT REMOVE PROTECTIONS AND COVERS!** RISK OF COLLUSION DUE TO THE LARGE FORCE OF ATTRACTION! DO NOT EAT NEEDLES ! KEEP THE SEALING COVER/ LID ON THE CILINDRICAL TANK !

THE MACHINE IS POWERED BY ELECTRICITY; BE CAREFUL THAT LIQUIDS NEVER GET INSIDE.

THIS PRODUCT IS MANUFACTURED BY TECHNIQUE ENGINEERING (ITALY) AND RESERVES THE INTELLECTUAL PROPERTY AND COMMERCIAL RIGHTS.

WITHOUT OUR WRITTEN PERMISSION IT IS NOT ALLOWED TO COPY OR REPRODUCE THE MACHINE OR TO DO ANY MODIFICATIONS, REPAIR OR MAINTENANCE TO IT.

